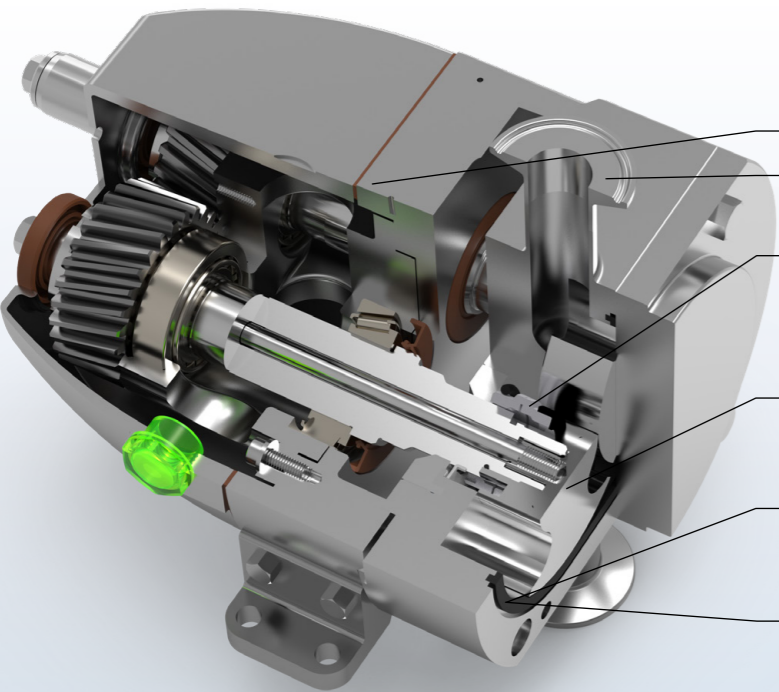
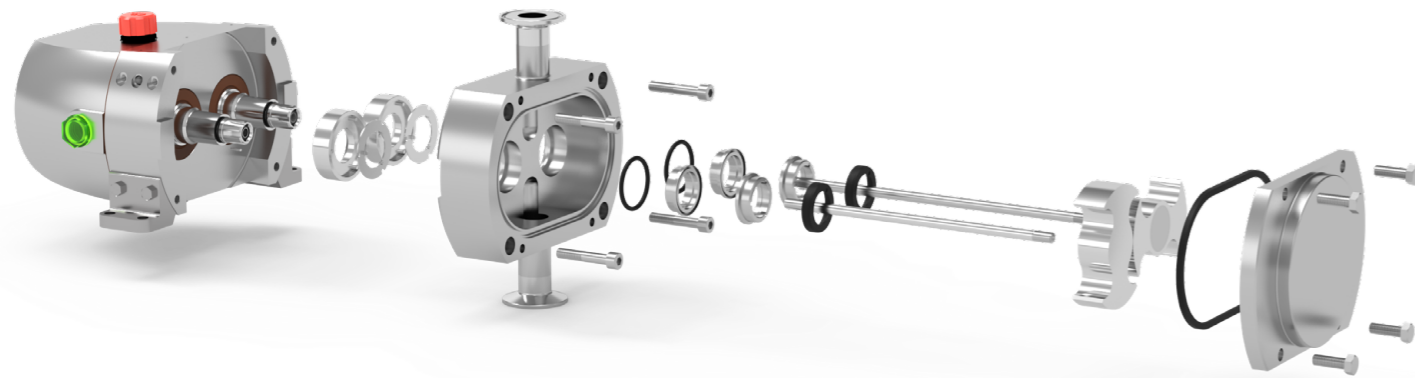


Pump series LU



Characteristics

The Ultima pumps are the ultimate solution for all areas where the highest product safety is required. Smoothest surfaces without dead spaces, an external rotor fixation as well as the optional steam barriers guarantee complete isolation of the product to the atmosphere and prevent an adhesion or penetration of microorganisms.



LU

- 1 Stainless steel gearbox and gearbox cover
- 2 Welded Tri-clamp ports, high-end polished welds.
- 3 Well positioned mechanical seals, optional with steam flush, optimize cleanability, sterility and protection against external penetration
- 4 External rotor fixation allows good cleanable, flat and smooth rotor front and avoids any dead space
- 5 Special static form rings minimize the risk of product entrapment and improve cleanability
- 6 Optional steam barrier avoids penetration of e.g. microorganism and creates a sterile sealing of the pump chamber.

Application areas

LU "Ultima" pumps, as their name suggests, combine all of the great features of the food grade HP (Hy-line +) series with even higher standards of in-place cleanability (CIP) & sterilization (SIP), of purity of liquids for applications where compromises are not an option. Ultima is used in truly sterile applications and everywhere only the highest system cleaning capability is good enough.

Your benefits

Cleaner

- Wetted surfaces mechanically polished and electropolished to Ra < 0.5 µm.
- Fully drainable pump casing design.
- Optimized design to eliminate dead spaces. Form rings instead of O-rings eliminate dead corners. Front cover sealing optional with steam barrier against penetration of bacteria, etc.
- Wetted parts of mechanical seal directly in the product stream.
- Unique rotor design with external fixation to avoid dead corners and improve cleanability.
- Stainless steel bearing housing and gear cover for good corrosion resistance and smooth clean surface.
- Materials certified to FDA, USP and 1935/2004 EC.

Shorter downtimes

- Rotor change without timing.
- Extended service intervals. The oil-lubricated gearbox avoids frequent relubrication of the bearings with grease. This reduces maintenance and increases operational reliability.

Higher flexibility

- Heating jackets for casing and front cover, pressure relief valve and many more options available.
- Pumps can be mounted with both horizontal and vertical port connections.
- Short mounting dimensions also for narrow space conditions

Pump series

LU

Performances	LU
Max flow rate	40 m ³ /h
Max viscosity	1,000,000 cP
Max differential pressure	15 bar
Max temperature	140°C
Technical specifications	
Materials wetted parts	stainless steel 316L 1.4404
Seal configuration	single, flushed, double mechanical seal
Available gasket materials	EPDM, FKM, PTFE
Connections	Tri-clamp to ASME BPE
Mounting position	horizontal and vertical
Surface finish	pharmaceutical quality, wetted surfaces polished to 0.5 µm standard electropolished
Certificates & legislation	

Pump curves

