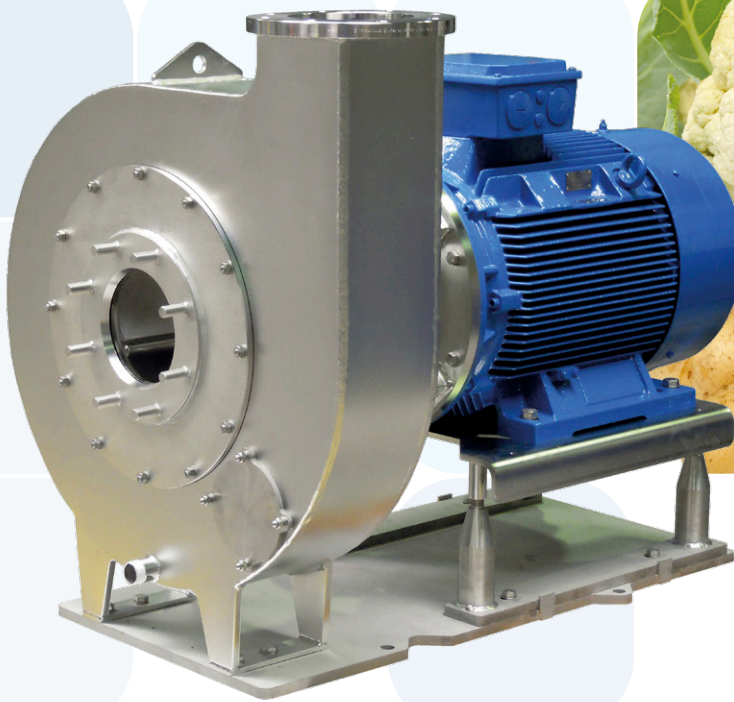


Packo VDKM Pump Series

# Stainless steel channel impeller pump

For the vegetable industries

**Packo**  
A VERDER COMPANY

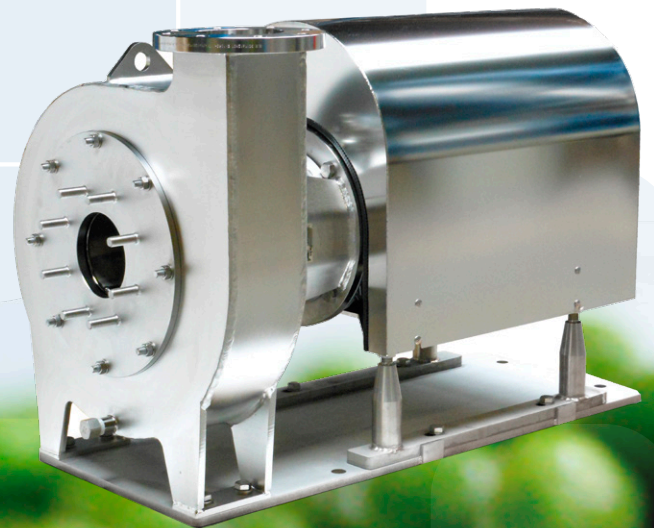


Due to its large free passage and its soft pumping action the VDKM pumps are especially designed to handle solid particles gently in water like complete or cut vegetables (beans, peas, carrots, cucumbers, cabbage, maize, onions, potatoes etc.), fruit (apples, pears, cherries etc.) and marine products (cockles, shrimps, mussels...).

The VDKM pump makes it possible to realise the transportation of food products through a pipe. This is not only more hygienic but also provides a large space saving in comparison with traditional conveyer belts, which prevent the free transportation passage of products within the company.

The pumps are made of stainless steel and are electropolished, this means as to hygiene (HACCP) and corrosion resistance they guarantee pure pumping of your food products.

The pump production takes place at the ISO 9001-certified Packo plant in Diksmuide, Belgium.





# Construction

Double channel impeller pump, especially adapted to pump fragile foods (e.g. vegetables)

Resistant to corrosion and no sharp corners or steps

Maintenance free and resistant to corrosion.  
Free from bacteria traps and perfectly cleanable (HACCP). No risk of rust in the water.  
Pump parts in stainless steel, electropolished.

It is possible that product residue can be washed away without opening the pump. Possible by injection of pure water in the seal cavity.

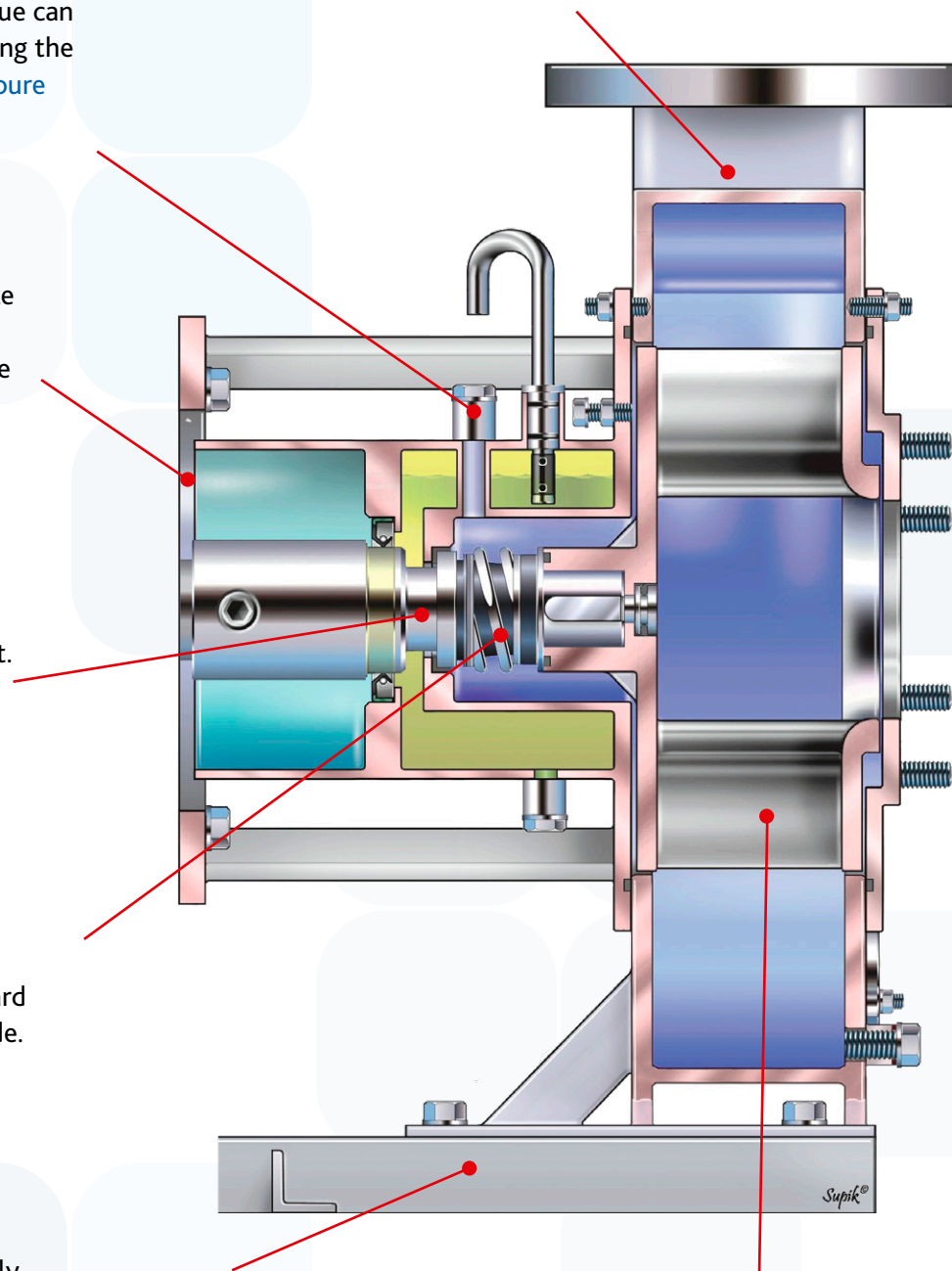
Compact construction. Ultimate speed control by the use of a frequency converter that can be supplied, ready-built into the motor, or built into your own control panel.  
Monobloc standard motor IEC.

Strong and wear-resistant shaft.  
Shaft in duplex.

Wear-resistant, leak proof and reliable mechanical seal.  
The mechanical seal is a standard product and available worldwide.  
Mechanical seal in oil bath.

Maintenance-friendly.  
Base plate and frame in stainless steel.  
For 150-400 and 200-500: the sledge construction makes it possible to inspect the impeller and the mechanical seal easily without having to disassemble the pump casing.

Free of vibrations and constant flow without damaging your product.  
Due to the double channel impeller that is dynamically balanced.



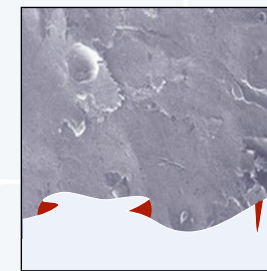
# HACCP

Rust proof and simple for cleaning

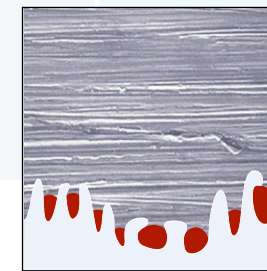
All stainless steel parts are electropolished

Electropolishing leads to extremely low microroughness, resulting in a substantially increased resistance to the adhesion of products. The result: excellent ease of cleaning. The pictures illustrate clearly that a mechanically polished or glass blasted surface shows a much higher microroughness with an increased risk of bacteria. (HACCP)

Electropolishing also leads to an increased corrosion resistance due to the higher percentage of chromium and nickel at the surface. This means no more rust water in your installation. Also the internal tension concentrations are solved, which reduces the possibility of tension corrosion strongly.



Glass blasted



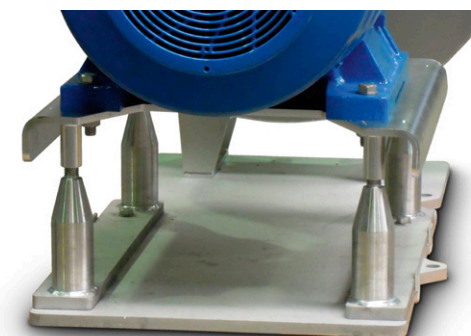
Mechanical polishing 240 grit



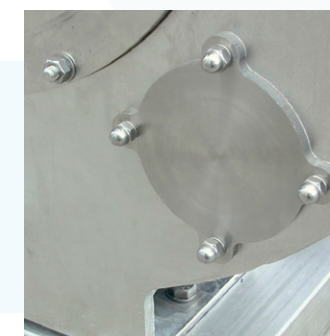
Electropolished

## Easy maintenance

A unique sledge construction makes it possible to slide the motor + impeller easily backwards, which means the pump casing and the pipes do not have to be disassembled in case of possible replacement or inspection of the impeller or mechanical seal.



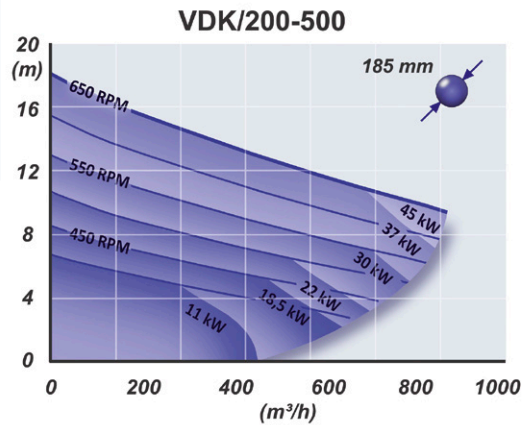
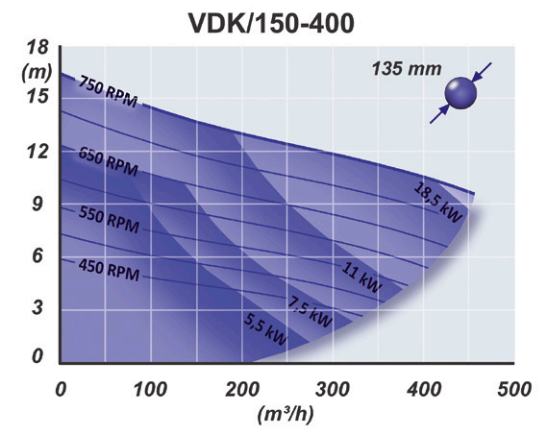
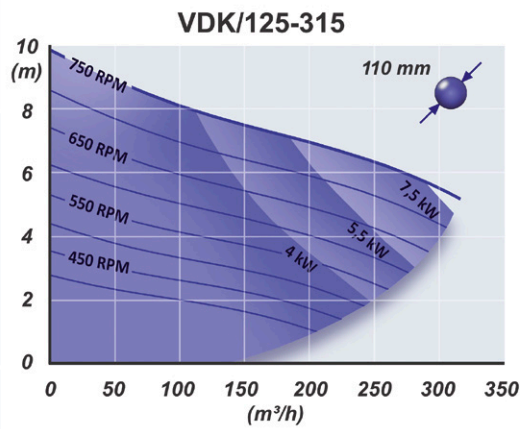
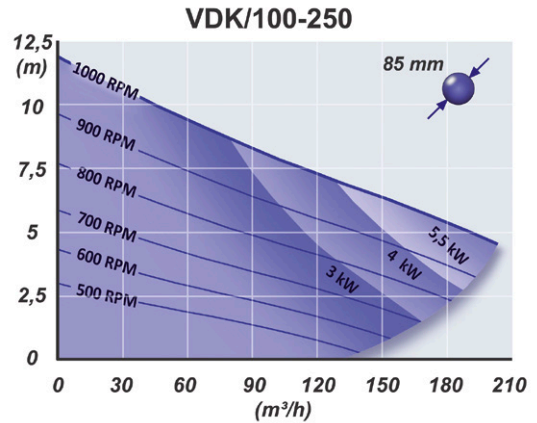
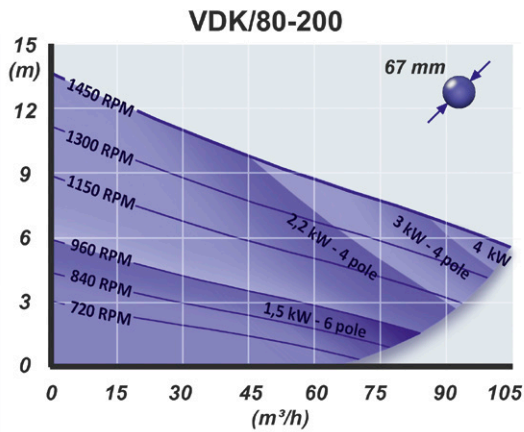
Inspection trap  
Standard on  
400 & 500 series



Oil level check and flush connection:  
possibility of water injection to flush the seal cavity.  
Not available for type 80-200



# Range of application



Recommended maximum product size

VDKM Type	spherical			long	
	ø mm	L(mm)	ø (mm)	ø(mm)	
80-200	35	54	26		
100-250	45	68	33		
125-315	60	88	43		
150-400	75	108	52		
200-500	100	148	72		



BQA\_QMS019\_C\_1994041



BQA\_EMS019\_C\_2015041

Production in Belgium  
in an ISO 9001 and ISO 14001  
certified company.

**Packo**  
A VERDER COMPANY

Packo Inox Ltd  
Industriepark Heernisse  
Cardijnlaan 10  
8600 Diksmuide BE  
Tel. +32 51 51 92 80  
Fax +32 51 51 92 99  
pumps@packo.com  
www.packopumps.com