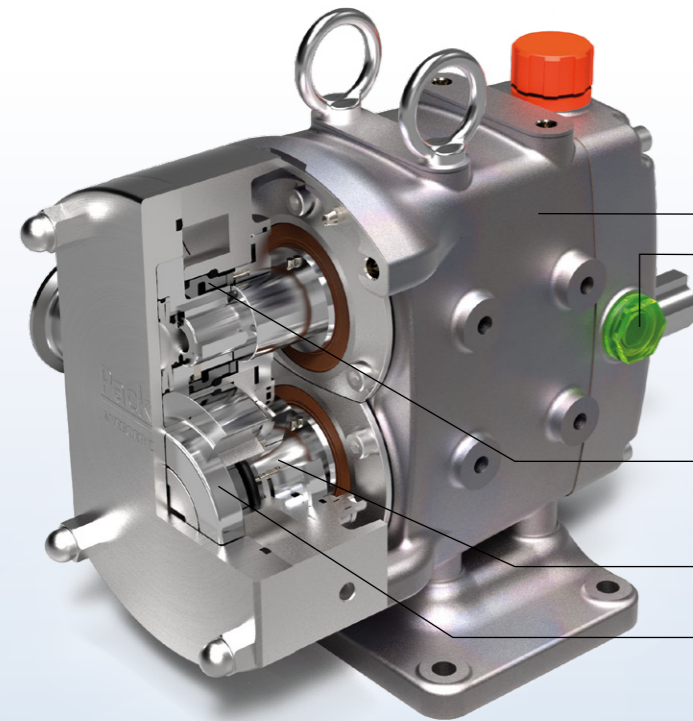
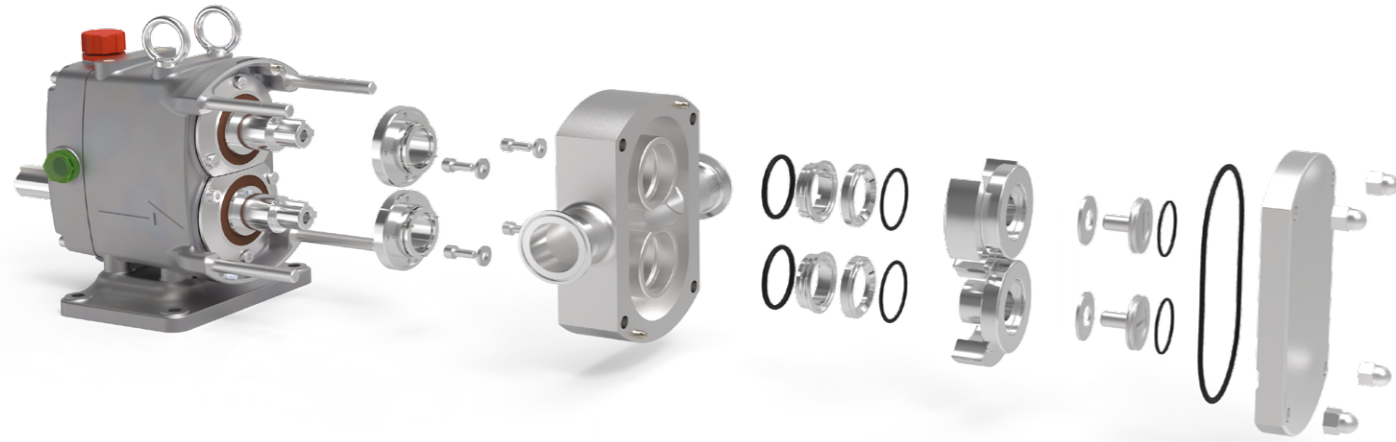


# Pump series ZP



## Characteristics

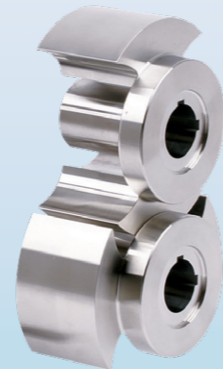
The Packo pumps of the ZP series are hygienic stainless steel Circumferential Piston Pumps. The rotors, made of the special non-galling material Nitronic 60, forgive high temperatures and abrasive particles, furthermore they offer a very good efficiency especially with low viscosity products. A high displacement, good suction capability and good cleanability are further features of the ZP series.



- ZP**
- Investment cast stainless steel gearbox available.
  - Food grade oil-filled gearbox increases bearing lifetime and requires minimal service effort. Ball bearings generate very low heat, helical and grinded gears guarantee smooth operation.
  - Design and Position of the seals, brings the CIP-fluid in direct contact with them.
  - Wetted seal parts can be replaced without disassembling the rotor case: pump does not need to be mounted out of the installation to change seals.
  - Smaller clearances result in less slip which results in better efficiency by pumping low viscous fluids.
  - Non galling rotors avoid blocking of casing and rotors in case of contact.

## Application areas

The Packo ZP Circumferential Piston Pumps are the perfect solution for use in the most difficult applications, e.g. critical suction conditions, high temperatures or abrasive fluids. Use of small clearances in combination with non-galling materials provide maximum efficiency and operational reliability.



Circumferential Piston rotors

## Your benefits

### Cleaner

- **Certified to EC1935/2004, EHEDG and 3A versions available**
  - Wetted surfaces with Ra < 0.6 µm
  - Wetted parts in SS316L and Nitronic 60
- **Unbeatably easy CIP cleanability**  
Due to the forward positioning of the mechanical seal in the piston, all areas that are difficult to clean are sealed off from the product area. Emergency solutions such as CIP holes offered by competitors are completely eliminated.
- **Shorter downtimes / higher flexibility**
- **Faster maintenance**
  - Pump can stay in piping during replacing seals thanks to front loaded seals.
  - No need to open gearbox for adjusting axial clearances between rotors and casing.
  - Rotors can be changed without timing.

### Extended service intervals

The oil-lubricated bearing pedestal avoids frequent relubrication of the bearings with grease. This reduces maintenance and increases operational reliability. In addition, oil reduces friction values, resulting in less heat generation and better efficiency.

### Universal mounting

- Top or bottom shaft can be switched without gearbox disassembly.
- Pumps can be mounted with both horizontal and vertical port connections.

### Heating jackets for casing and front cover, pressure relieve valve, by-pass valve and many more options available.

Pump series	ZP
<b>Performances</b>	
Max flow rate	42 m³/h
Max viscosity	1.000.000 cP
Max differential pressure	15 bar
Max temperature	180°C
<b>Technical specifications</b>	
Materials wetted parts	stainless steel 316L and Nitronic 60
Seal configuration	single, flushed, double mechanical seal, O-ring seal, triple lipseal
Available material O-ring	EPDM, FKM, FFKM
Connections	sanitary and industrial fittings, rectangular inlet available
Mounting position	horizontal and vertical
Surface finish	food quality, internal welds hand polished to 0.6 µm
Certificates & legislation	

## Pump curves (Data for guidance only. Based on 0 bar at pump inlet.)

