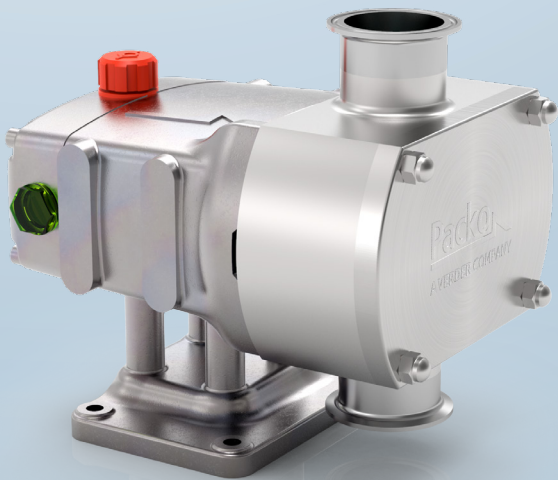


INNOVATIVE HYGIENIC PUMPING SOLUTIONS

HYGIENIC PUMP PROGRAM



- ✓ Best cleanability
- ✓ Certified quality
- ✓ Innovative pumping solutions

ENABLING PROGRESS.

GET IN TOUCH

With the hygienic pump manufacturer

NEW: Verderflex Ds500

Peristaltic dosing and metering pump, where peristaltic technology makes the difference. The Ds500 metering and dosing pump has been designed specifically for challenging traditional technological solutions to certain pumping applications. The principle behind this technology is to improve the accuracy and save the end user money with both direct costs in terms of chemical usage and indirect costs by minimal tool free maintenance and servicing.

Discover our Verderflex Ds500 →

VERDER [Get a question?](#)

VERDER [Pumps](#) [Technologies](#) [Industries](#) [Company](#) [News](#) [Downloads](#) [Contact](#)

The Leading Pump Manufacturer

We have a passion for pumps since 1959. With our 27 locations worldwide and an extensive dealer network, you are always guaranteed with global presence and local service.

Discover our pumps →

Our Pumps

| | |
|---|--|
| Verderflex Discover peristaltic pumps → | Verderair Discover diaphragm pumps → |
| Pacco | Our Broad Range of Pumps |

- ✓ Product information
- ✓ Application stories
- ✓ Datasheets
- ✓ Videos

Contact VERDER

If you would like to know more about VERDER hygienic pumps then please visit our website www.verderliquids.com where you will find the full breakdown of our pump range as well as application stories, latest news and technical datasheets and more.

VERDER LIQUIDS BV

Utrechtseweg 4A
3451 GG Vleuten
The Netherlands
info@verderliquids.com
www.verderliquids.com

To provide you with the best possible service VERDER is supported by a distribution network that covers all five continents and is continuing to expand. Our group of distributors includes members of the VERDER GROUP and experienced independent companies. Our worldwide distribution network also help to provide our customers local support and spares availability.

THE VERDER GROUP

Enabling progress

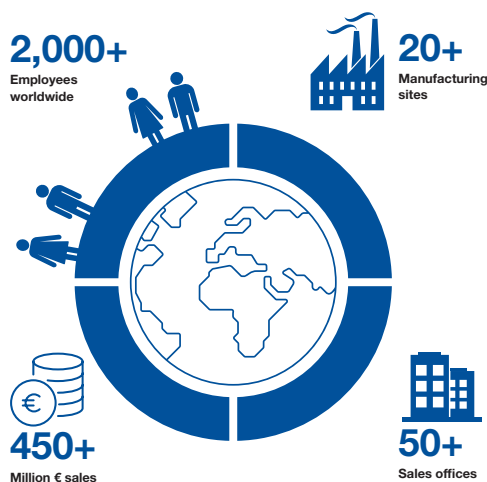


The VERDER group is a family-owned business formed over 60 years ago in the Netherlands; the group consists of a worldwide network of production and sales offices. Group companies are involved in the development and distribution of industrial and hygienic pump solutions, high-tech equipment for quality control and Research & Development into solid material (solids sample preparation and analytical technologies).

- 1 Company
- 27 Countries
- > 60 Years of expertise
- > 20 Manufacturing companies
- Global network
- Local distributors
- In-house service & maintenance
- A solution for every application
- In-depth knowledge of processes and applications

For years, Verder has led in innovation, driving our and our customers' success. Our global network of over 70 sales and manufacturing sites offers personalized sales and technical services, ensuring close customer relationships crucial for providing specific support and building lasting, trusting partnerships.

Verder is dedicated to making a positive impact by aligning with the UN's Sustainable Development Goals (SDGs) through our Environmental, Social, and Governance (ESG) program. Our goal is to lessen our environmental footprint, enhance employee well-being, and uphold ethical practices.



Inventing to make the world a better place

We leverage our expertise in sample preparation, analytical equipment, and professional pumping to empower our customers. We enable progress by improving their operations, we contribute to safer, more efficient, and sustainable processes, products, and services. Our contributions are pivotal in securing safe food supplies, ensuring responsive healthcare, and safeguarding clean drinking water in millions of households.

As a united family, we embrace our societal responsibilities with passion and a commitment to excellence. Our collective efforts are aimed at fostering a healthier, safer, and more sustainable world for all.

ENABLING PROGRESS.

APPLICATIONS IN HYGIENIC INDUSTRIES

VERDER offers a wide program of pumps for hygienic applications in the food, pharma and dairy industry. Examples of the processes where our pumps operate successfully are listed below. Of course, there are many other areas in the hygienic market where our pumps can be applied.

Beverage

| | pages |
|---------------------------|----------------|
| Hot brewing process | 12, 18 |
| Cold beer brewing process | 12, 18 |
| Filtration | 12, 18, 22 |
| CIP | 12, 14, 18, 26 |
| (Waste) water treatment | 12, 24, 26 |



Food / Feed

| | pages |
|---------------------------|----------------|
| Mixing/dispersing | 20 |
| Brine injection | 12, 14, 16 |
| Fish & shellfish handling | 22 |
| Egg white/yolk handling | 16, 18 |
| Animal blood handling | 12, 16, 18 |
| Animal feed systems | 22 |
| CIP | 12, 14, 18, 26 |
| (Waste) water treatment | 12, 24, 26 |



Dairy

pages

| | |
|---------------------------------|----------------|
| Collection, storage & unloading | 14, 23 |
| Filtration | 12, 16, 22 |
| Evaporation | 12, 16 |
| Heat treatment | 12, 16, 18 |
| CIP | 12, 14, 18, 26 |
| (Waste) water treatment | 12, 24, 26 |



Vegetables & potatoes

pages

| | |
|-----------------------------|----------------|
| Destoning, washing, cutting | 12, 22 |
| Transport of vegetables | 22 |
| Blanching | 12 |
| Frying | 23 |
| CIP | 12, 14, 18, 26 |
| (Waste) water treatment | 12, 24, 26 |



Biotech/Pharma/Cosmetics

pages

| | |
|-------------------------|----------------|
| Distilling | 12, 14, 26 |
| Purifying | 12, 26 |
| Injection | 12, 26 |
| Filtration | 12, 14 |
| CIP | 12, 14, 18, 26 |
| (Waste) water treatment | 12, 24, 26 |



HYGIENIC DESIGN PRINCIPLES & CERTIFICATIONS



European regulation about food materials and articles intended to come into contact with food. Guidelines about the traceability and the use of materials that do not deteriorate the colour, flavour, smell or taste of the properties of the food.



Additional regulation on top of EC1935/2004 is the EC10/2011 for plastic materials and articles intended to come into contact with foodstuffs. It concerns a.o. ion exchange resins, rubber and silicones.

ASME BPE

Standard for the design and construction of equipment used in the manufacturing of biopharmaceuticals and pharmaceutical industry.



The European Hygienic Engineering and Design Group has defined European standards for process equipment in hygienic environments. It concerns cleanability, engineering and design of process equipment.



This American standard specifies criteria for the design and fabrication of equipment that comes into contact with food. The guiding purpose of 3-A sanitary standards is to protect public health by using sanitary certified equipment.



ATEX is a European Directive (2014/34/EC) for explosion-proof electrical and mechanical equipment, components and protective systems. It concerns the manufacture of products which are used in potentially explosive atmospheres.



The American Food and Drug Association is an organization that gives references for food and pharmaceutical products to stipulate and classify substances that are compliant.



The United States Pharmacopeia (USP) has defined the minute standards to safeguard the quality of medicines and other health care technologies for pharmaceutical and bio-technology industries. There are guidelines for quality, purity, strength and consistency.



Minimum Efficiency Index, guideline for efficiency of pumps. This index gives a percentage from the sold pumps in the market on a certain moment with a low hydraulic efficiency on BEP. From 01/2015 MEI \geq 0.4. 95% of our centrifugal pumps complies to MEI.

SUPERIOR FINISHING GRADES



Every hygienic industry has its specific expectations and above all critical finishing requirements. PACKO has 3 major finishing grades with matching couplings for the centrifugal pump range so that the pumps can very easily meet the necessary certificates within these specific industries without being overspec in terms of cost.

Industrial/basic food finishing

- Rough finishing of internal welds
- Industrial couplings (EN 1092-1, BSP, ANSI and more)
- Electropolishing

Hygienic finishing

- Hand polished internal welds
- Hygienic couplings (DIN 11851, Tri-clamp, SMS, RJT and more)
- Electropolishing

Pharmaceutical finishing

- Hand polished wet pump parts up to a minimum roughness of 0.4 μ m, pharmaceutical couplings (Tri-clamp, and more)
- Electropolishing

Electropolishing: a superior finish

Most austenitic steel alloys contain iron, 18% chrome and 8% to 10% nickel. The rich metals chrome and nickel are responsible for the chrome oxide skin which gives stainless steel a high corrosion resistance. By electropolishing, which is an anodizing process where the treated objects are hung anodically in baths filled with electrolyte and electric current. The chemicals dissolve the impurities and iron. By this process, the ratio of chrome and nickel on the surface improves, making the stainless steel chemically very inert due to the development of a chromium oxide layer on the surface. This results in a lower average roughness which makes products more difficult to adhere and avoids bacterial traps and increases the cleanability. In addition, the surface is given greater resistance to corrosion.

THE HYGIENIC PROGRAM

Offering a wide range of hygienic solutions



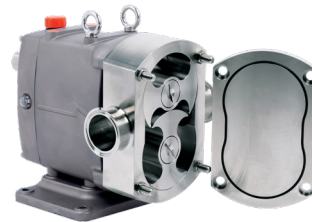
PACKO standard centrifugal pumps



PACKO prime centrifugal pumps



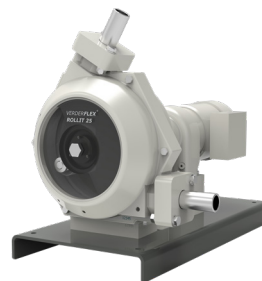
PACKO rotary lobe pumps



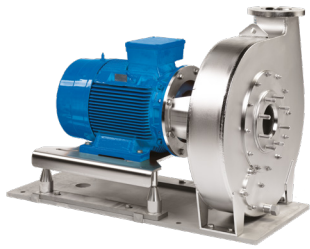
PACKO circumferential piston pumps



VERDERFLEX peristaltic dosing pumps



VERDERFLEX hygienic hose pumps



PACKO dedicated centrifugal pumps



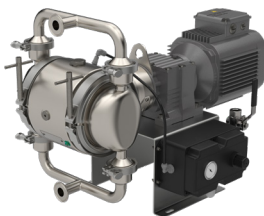
PACKO shear pumps and Verdermix



PACKO Twin screw pumps



VERDERAIR air driven diaphragm pumps



VERDERAIR electrical diaphragm pumps

OUR PRODUCTION COMPANIES

We are rightly proud of our production companies, with VERDER brands being produced in 6 locations in Germany, United Kingdom, Belgium, Poland, South Korea and Italy. In-house pump production allows us to be more responsive to customer demands, assures the shortest lead times and maintains greater control over quality and costs.



Verderflex, Verdermag & Verderhus – United Kingdom

VERDER's British manufacturing facility comprises the development and production of the VERDER house brand VERDERFLEX (peristaltic pumps), Verdermag (mag drive centrifugal pumps) and Verderhus (screw centrifugal pumps).

These pump series seek excellence from every aspect of the product and its journey to the customer. Continuous improvements provide the best possible product. After four decades of development and production, it is still the goal to further improve the performance and build of every pump we make.



Metplast (MTP) – Poland

Our VERDERAIR PURE, e-PURE and HC-PURE machined double diaphragm pumps are manufactured at the Metplast production location, according to the very highest production standards. In this modern production location everything is focused towards maintaining the highest standard of quality with a stringent protocol of testing.

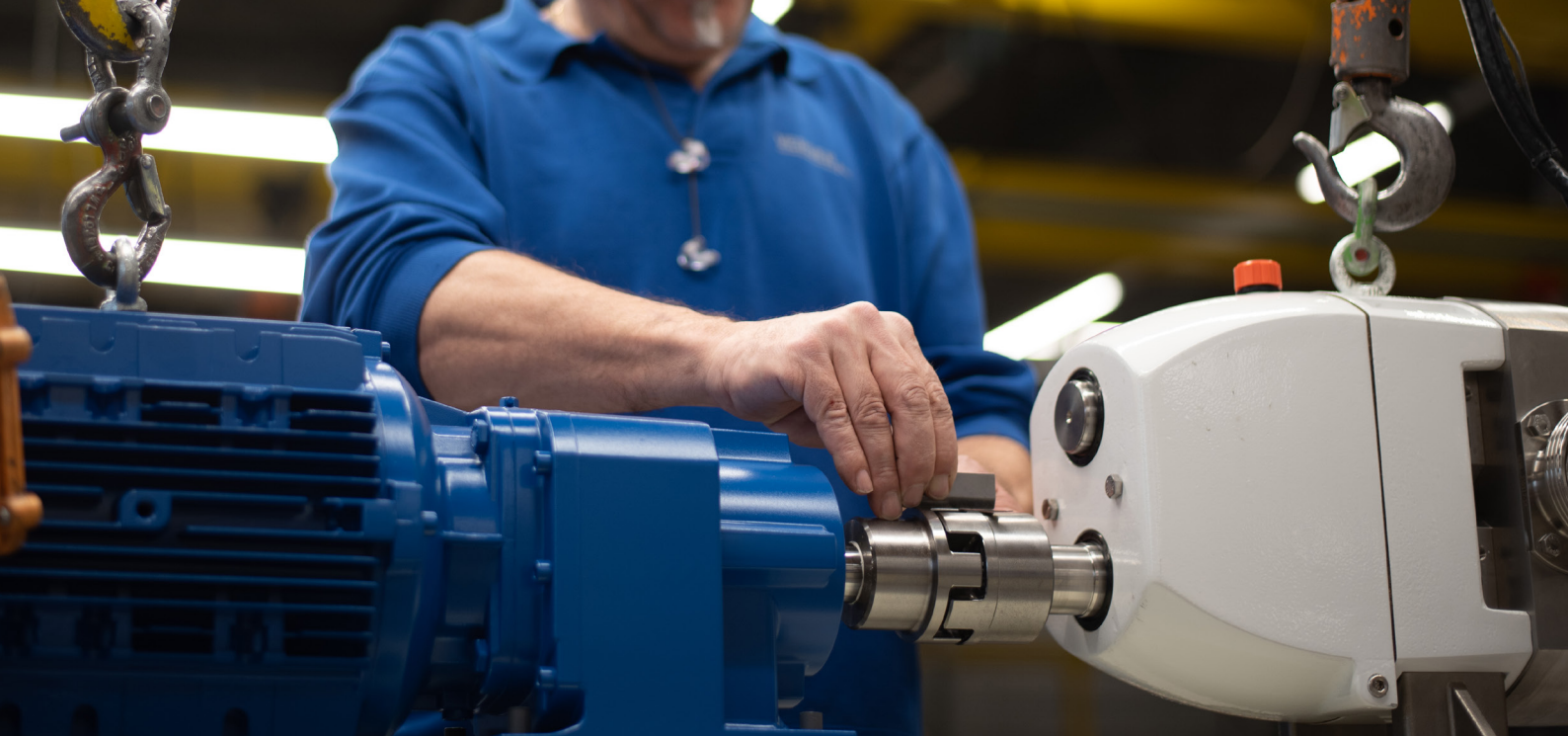


Ponndorf – Germany

The Verderflex Rollit pump, hygienic and industrial, is manufactured at Ponndorf, Germany.

For over 50 years, Ponndorf has been developing and manufacturing high-quality peristaltic pumps, which are known for their rigid and robust construction.

The Rollit pumps are lubricant-free roller peristaltic hose pumps that are easy to maintain, especially if you need a quick hose change, and available in a standard single and twinhead version.



PACKO – Belgium & South Korea

PACKO, our manufacturing company, specializes in producing the highest quality stainless steel centrifugal pumps, as well as hygienic rotary lobe and twin-screw pumps for industrial, food, and pharmaceutical uses.

Our Belgian-made centrifugal pumps undergo a unique electropolishing process, including hand finishing, to ensure uncompromised quality. Additionally, we produce both static and dynamic mixers, while our rotary lobe and twin-screw pumps are made in South Korea.



Microdos – Italy

Microdos is a manufacturer of small dosing pumps and systems. They produce Microdos solenoid and peristaltic pumps including related professional control instruments and complete dosing systems.

Microdos has developed a strong position in Southern European countries for applications in swimming pools, detergent dosing and water treatment applications. Microdos also provides private labelling pumps for third party companies.



ITC – Spain

ITC supplies dosing pumps and control systems for agricultural and water treatment applications, and has a manufacturing and assembly facility in Barcelona.

ITC's commitment is based on innovation, quality and excellent service. They offer a technified irrigation system, without losses and that allows greater control and precision of fertilizer than conventional irrigation systems.

OUR HYGIENIC PUMPS

Key players with highest hygienic standards

The hygienic pumps from VERDER are problem solvers for the hygienic market. We offer a high quality program of hygienic pumps, each having its own special advantages in specific application areas. Most pumps in our hygienic portfolio are manufactured in industrial, food or pharmaceutical versions. Our portfolio is extensive; we can offer a pump solution tailored to your specific hygienic process.



Corporate Qualities

- Priority orders
- Worldwide network
- Specific OEM features
- Own manufacturing
- In house engineering



Support

- Digital pump selector
- Standard spare parts
- Strong logistic services
- Worldwide stock available

Finishing levels

- Finishing grades
Industrial - Food - Pharma
- Hose & tube qualities
FDA CFR 21- EC/1935-2004
USP Class VI
Platinum Cured Silicone

PACKO centrifugal, rotary lobe and twin screw pumps

PACKO is specialized in hygienic pumps. Centrifugal, rotary lobe and Twin screw pump cover almost all application in situations where a hygienic pump level is required.

VERDERAIR HI-CLEAN pumps

VERDERAIR HI-CLEAN is a complete series double diaphragm pumps; air operated or electrically driven, which fits the application best.

VERDERFLEX peristaltic pumps

VERDERFLEX hygienic peristaltic pumps are perfect pumps for applications where additives are being dosed. Full control of dosing applications in the hygienic market.



PACKO STANDARD CENTRIFUGAL PUMPS

This pump series can meet the high requirements of EHEDG and 3A certification. They excel in hygienic cleanability, reliability and are easy to handle. All PACKO centrifugal pumps are configured to order, offering a huge range of pump configurations. The standard pumps are used in demanding applications such as dairy, food & beverage and pharmaceutical. This series is also perfectly applicable in industrial applications such as mining, chemicals and waste water. In fact at all duties where a high corrosion resistance is required.

All of these pumps are available in industrial, food and pharmaceutical finish.



| PACKO Standard | FP60 | FP1 | FP2/3 | MFP 2/3 |
|---------------------------------------|----------|--------------------|-----------------|-----------|
| Concept | Economic | Value for money | Continuous duty | High flow |
| Max. flow [m³/h] | 40 | 55 | 320 | 1800 |
| Differential head [mwc] | 27 | 37 | 120 | 75 |
| Min. internal surface roughness [µm]* | 0,8 | 0,8 (impeller 3,2) | 3,2 | 3,2 |
| Certifications* | | | | |

* highest possible levels



PACKO PRIME CENTRIFUGAL PUMPS

The PACKO prime pumps are a range of pumps especially configured for CIP return applications and truck unloading. Used in the most demanding applications in dairy, food & beverage but also in more industrial applications where liquid air-gas mixtures have to be pumped. Everywhere where a self-priming capability is required.

Depending on the liquid, gas/air quantity, solids laden fluids, and the self-priming or air-handling requirements there are models available as:

- pump with static degasser or an air screw
- side channel pump
- centrifugal liquid ring vacuum pump

All of these pumps are available in industrial, food and pharmaceutical finish.



| PACKO Prime | CRP | MSCP | MSP2 | GFP |
|----------------------------------|-------------|--------------|--------------|-----------|
| Concept | Centrifugal | Side channel | Self-priming | Defoaming |
| Max. flow [m³/h] | 150 | 50 | 70 | 400 |
| Differential head [mwc] | 75 | 80 | 43 | 30 |
| Internal surface roughness [µm]* | 0,4 | 3,2 | 3,2 | 3,2 |
| Certifications* | | | | |

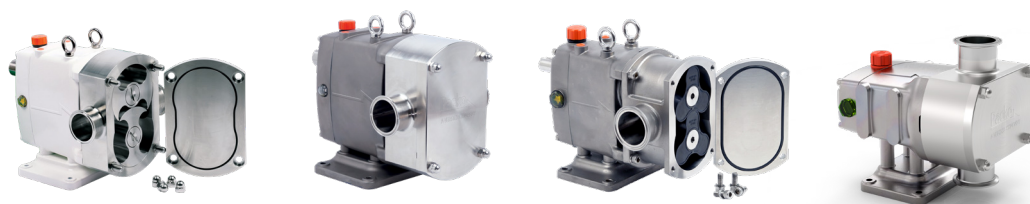
* highest possible levels







Manufactured in Germany
Packo
DO NOT RUN PUMP DRY
CE

PACKO ROTARY LOBE & CIRCUMFERENTIAL PISTON PUMPS

Each series of the PACKO rotary lobe and circumferential piston pumps is state-of-the-art. The pumps can be fitted with a variety of features and rotors to adapt to almost all hygienic pumping tasks. The pumps can be customized to meet the optimum function or performance to your process.



| | ZL | ZP | ZW | ZLC |
|----------------------------------|---|---|--|---|
| Concept | Rotary lobe pump | Circumferential piston | Wine pump | Pharmaceutical lobe pump |
| Max. flow [m ³ /h] | 100 | 42,5 | 18 | 100 |
| Max. discharge pressure [bar] | 20 | 15 | 6 | 20 |
| Internal surface roughness [μm]* | 0,6 | standard 0,6 (option 0,4) | 0,6 | 0,4 |
| Certifications* |  |  |  |  |

* highest possible levels

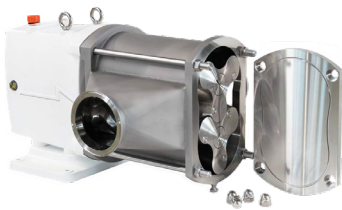
The Packo rotary lobe pumps are developed and engineered for specific applications, such as:

✓ **Cheese curd pump**

The Packo ZL560 is probably the biggest cheese curd pump made to gently handle the product without damaging the curd particles.

✓ **Transfer of wine**

The ZW pump is executed with PE rotors to prevent galling from grape skins, seeds and stem.



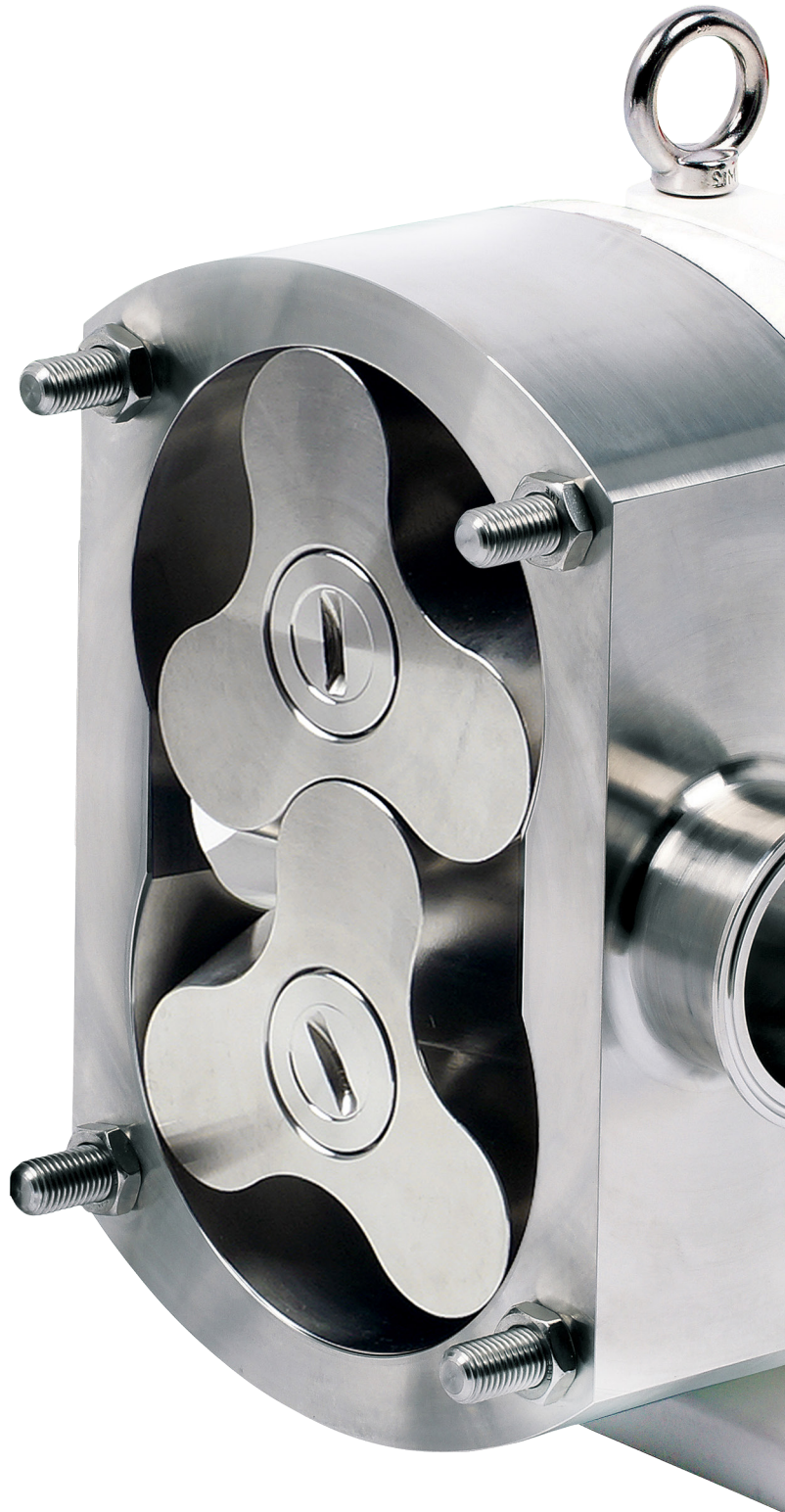
ZL560

Cheese curd pump

12 l/rev

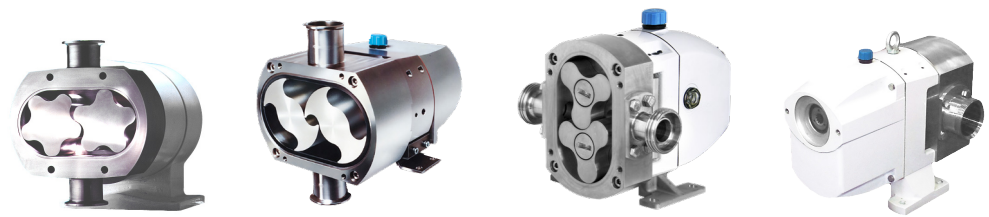
4





0,6



PACKO ROTARY LOBE PUMPS

PACKO's range of rotary lobe pumps includes a variety of types and models, each representing the state of the art in its specific application. The pumps are available in a wide variety to suit your specific application. PACKO rotary lobe pumps are a valuable addition to the existing PACKO pump program because of their balanced seal assembly and the strong shaft construction. They are the preferred solution for applications with pressures over 12 bar.

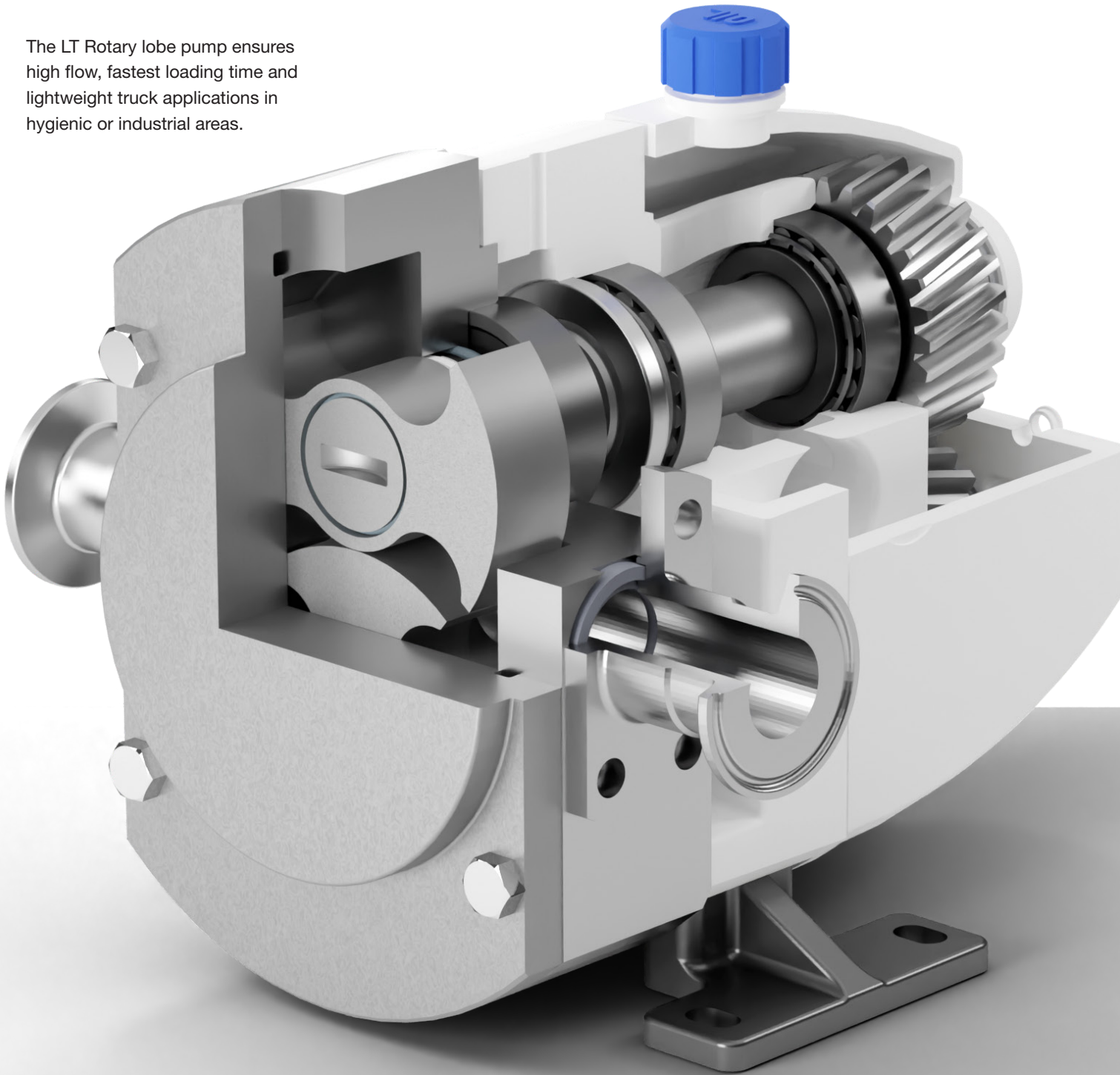


| | 55 | ULTIMA | HP | LT |
|----------------------------------|---|---|--|---|
| Concept | Rotary lobe- ultra clean | Rotary lobe - heavy duty | Rotary lobe - Bi-wing | Rotary lobe - tanker |
| Max. flow [m ³ /h] | 44 | 44 | 131 | 41 |
| Max. discharge pressure [bar] | 20 | 15 | 15 | 15 |
| Internal surface roughness [μm]* | < 0,5 | < 0,5 | < 0,8 | < 0,8 |
| Certifications* |  |  |  |  |

* highest possible levels

✓ **Truck unloading**

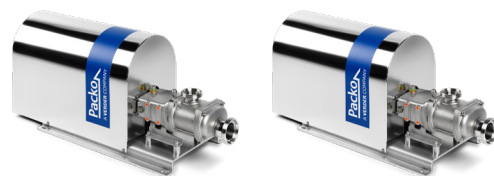
The LT Rotary lobe pump ensures high flow, fastest loading time and lightweight truck applications in hygienic or industrial areas.





PACKO TWIN SCREW PUMPS

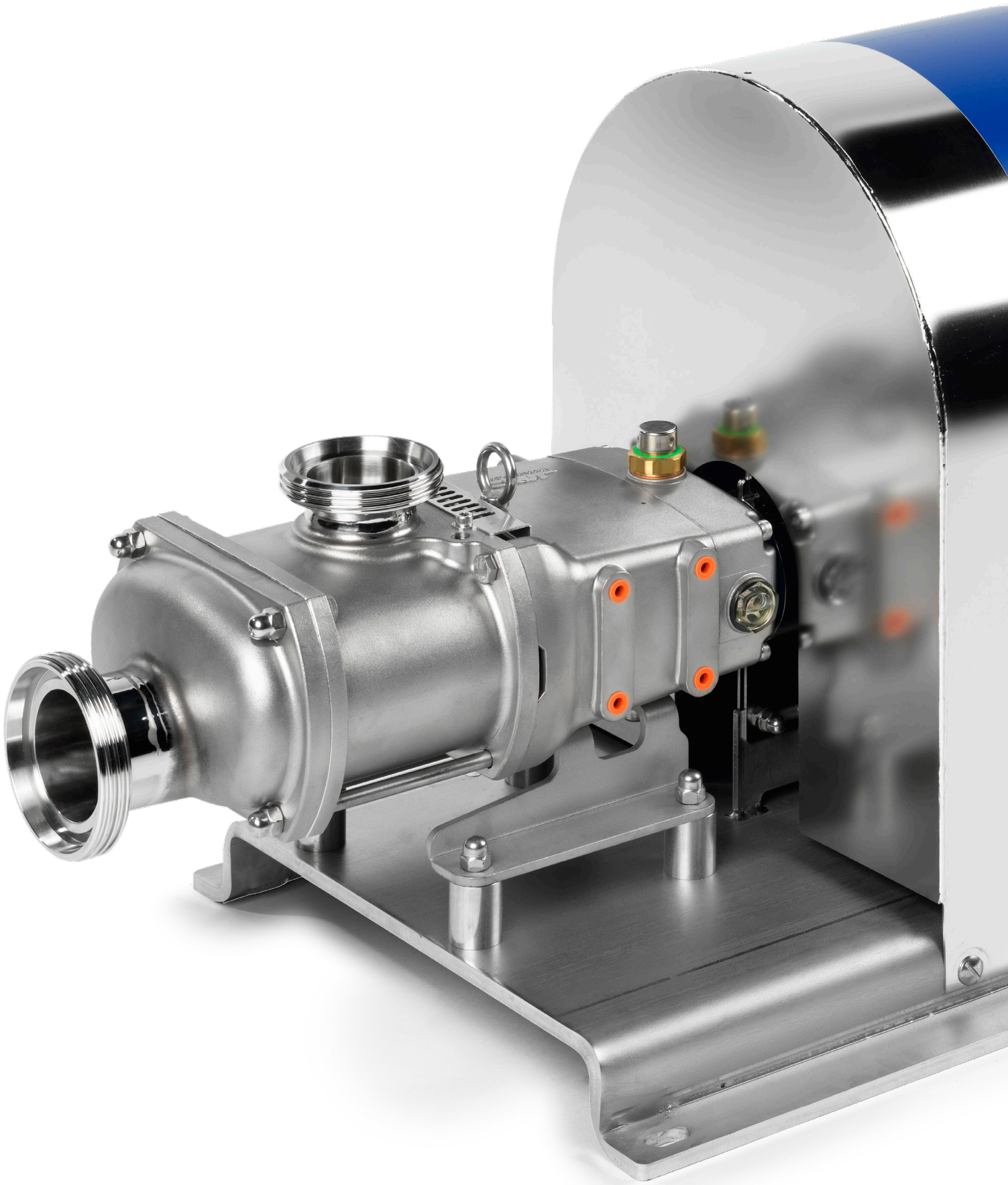
All advantages of rotary lobe pumps and centrifugal pumps are combined in the PACKO Twin screw series. This two-in-one operation pump series is excellent for pumping not only high-viscous liquids and pastes but also the thin-liquid cleaning fluids that are used for CIP cleaning. The pumps provide a pulsation free flow for gentle operation.

The PACKO Twin screw series offers highest flexibility, the hygiene standard is unmatched in this product area. The ZS sets the standard, the use of stainless steel in combination with optimally shaped and easy to clean surfaces is a huge benefit in any modern food production. The inner values are polished surfaces with a quality of <math><Ra\ 0.6\mu m</math>. Smooth transitions and large curves prevent product build-up and simplify cleaning and sterilization, in addition, better product handling is achieved.



| | ZS | ZSC |
|----------------------------------|---|---|
| Concept | Twin screw | Twin screw pharma |
| Max. flow [m ³ /h] | 100 | 100 |
| Max. discharge pressure [bar] | 12 | 12 |
| Internal surface roughness [μm]* | 0,6 | 0,4 |
| Certifications* |  |  |

* highest possible levels



PACKO SHEAR AND MIX PUMPS & MIXERS


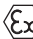





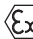




The shear mix pump range consists of a high shear mixer with a patented stator for high flow and pressure and a homogenizer shear mixer for the dispersion of higher viscosities which can also be executed as a full unit. These shear mixers have the highest efficiency on the market, offering energy savings. The range is complemented with static and dynamic mixers. Shear mixer pumps and static mixers are mainly used for in-line mixing, homogenizing and dispersing.

Shear mixer pumps and static mixers are the best choice when the fluids to be mixed have:

- a large difference in specific gravity
- a large different viscosity
- a difficult mixing match

This series is also perfect for dispersing of solids in liquids and gas in liquids.



| PACKO Shear | SFP | JSB | Verdermix VSM | Colloid mill CM |
|----------------------------------|---|---|---|---|
| Concept | Shear mixer | Homogenization mixer | Static mixer | Grinding & mixing |
| Max. flow [m³/h] | 200 | 60 | - | 15 |
| Differential head [mwc] | 55 | 70 | - | 35 |
| Internal surface roughness [µm]* | 3,2 | 1,6 | - | 3,2 |
| Certifications* |    |    |    |    |

* highest possible levels



PACKO DEDICATED PUMPS

The PACKO dedicated centrifugal pumps are developed and engineered for specific applications. It is an application dedicated pump series for:



Filtration

The FPP pump with high inlet pressure or the FMS multi-stage pump when a high outlet pressure is required.



Animal feed proces





The MWP pump which is a duplex pump with higher resistance against abrasive fluids.



Hydro transfer

The VPCP pump, a high flow pump, with the guaranteed lowest product damage on the market for the transport of e.g. vegetables such as potatoes and shellfish like mussels and prawns.



| PACKO dedicated | FMS | FPP | MWP | VPCP |
|----------------------------------|---|---|--|---|
| Concept | Multi stage | High inlet pressure | Abrasive resistant | Product pump |
| Max. flow [m ³ /h] | 50 | 200 | 55 | 1000 |
| Differential head [mwc] | 160 | 70 | 60 | 20 |
| Internal surface roughness [µm]* | 3,2 | 3,2 | 3,2 | 3,2 |
| Certifications* |  |  |  |  |

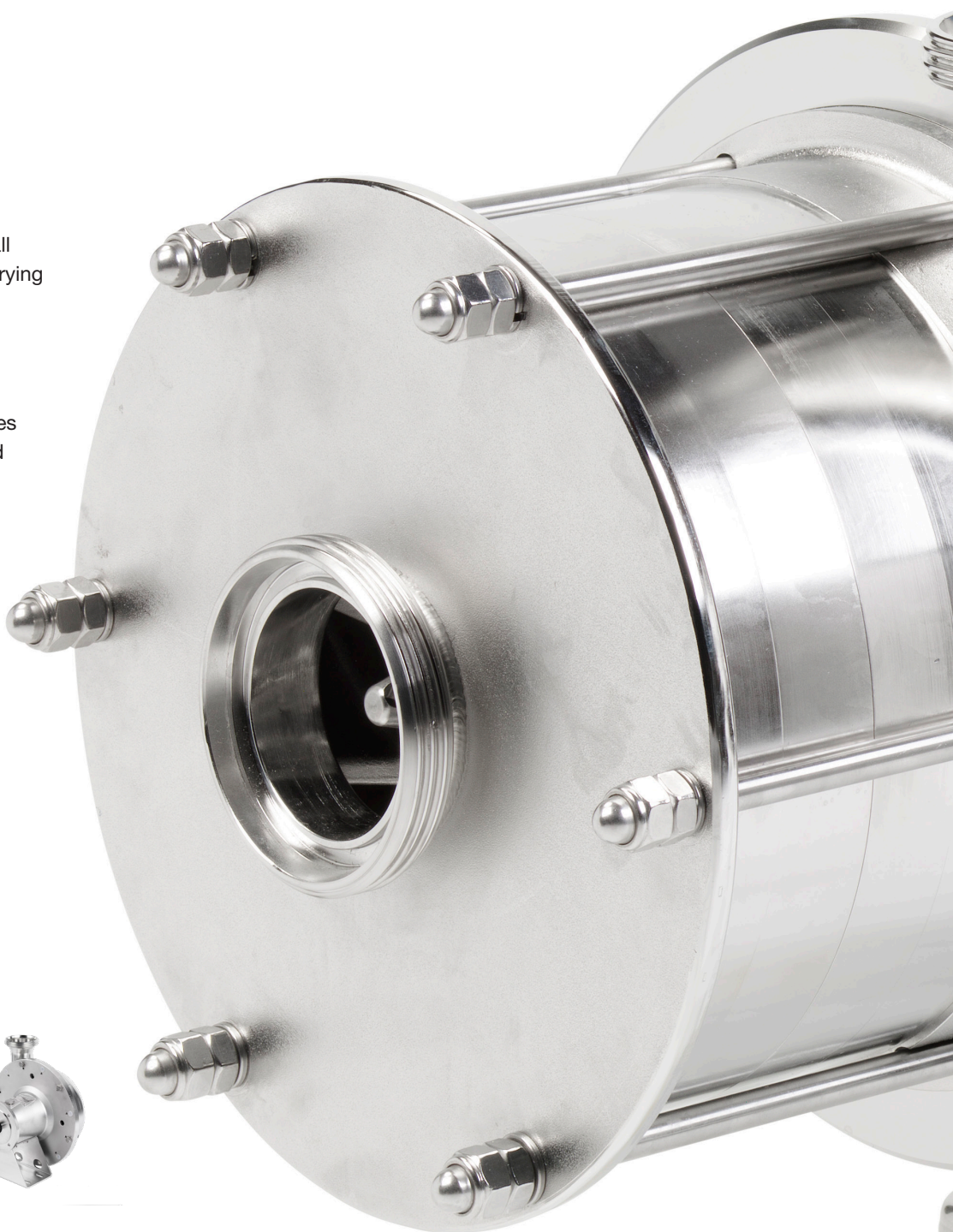
* highest possible levels






✓ **Non-sealable liquids**

The IM cantilever pump handles all non-sealable liquids such as hot frying oil with care.

✓ **Truck unloading**

The RMO centrifugal pump ensures high flow, fastest loading time and lightweight truck applications in hygienic or industrial areas.

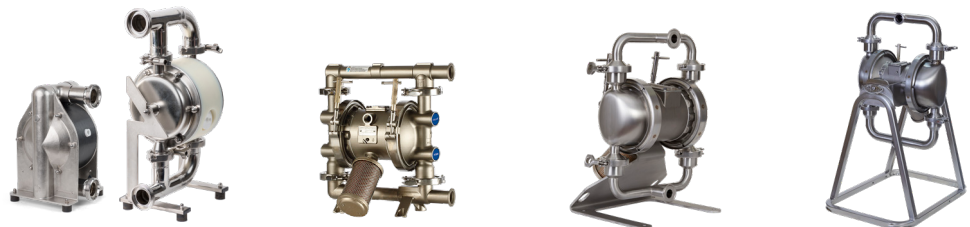






| IM(X)L & IMO | RMO |
|---|---|
| Cantilever | Truck unloading |
| 800 | 250 |
| 60 | 30 |
| 3,2 | 3,2 |
|   |    |

VERDERAIR HI-CLEAN HYGIENIC DIAPHRAGM PUMPS

The VERDERAIR HI-CLEAN pumps are designed for operation in food, beverage and pharma applications, The series consist of hygienic air operated (AODD) and electrically driven (EODD) operated diaphragm and air operated piston pumps. When compressed air is not available, a unique electrically driven series is available EODD), with all benefits of the normal AODD series, including automatic stalling against a closed discharge line! As a second advantage the pump can run in low pulsation mode.

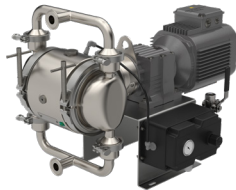
The single piece manifold reduces clamps and areas for food or bacteria to hide. HI-CLEAN pumps come with an externally serviceable air valve. Due to the rotatable stand the pump can rotate 360 degrees for quick draining and servicing of the pump.



| | HC-PURE | FDA serie | Hi-Clean | Hi-Clean |
|---------------------------------|---|---|--|---|
| | High hygienic series | FDA series | Sanitary ball series | Pharma series |
| Max. flow [l/min] | 650 | 606 | 870 | 870 |
| Max. discharge pressure [bar] | 7 | 8 | 8 | 8 |
| Max. solids particles [mm] | 10 | 6,3 | 19 | 19 |
| Internal surface roughness [µm] | < 0,8 | 3,2 | 0,8 | 0,5 |
| Certification |  |  |  |  |



✓ All series (except HC-PURE and SP) also available as electrically driven model



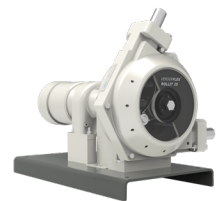
| Hi-Clean | Hi-Clean | Hi-Clean | Hi-Clean SP |
|--------------|---------------------|------------------|-----------------|
| 3A certified | Electrically driven | Sanitary Flapper | Sanitary Piston |
| 870 | 378 | 340 | 9,5 |
| 8 | 7 | 8 | 17 |
| 19 | 96,5 | 96,5 | 19 |
| 0,8 | 0,8 | 0,8 | 0,8 |



VERDERFLEX HYGIENIC PERISTALTIC PUMPS

VERDERFLEX peristaltic pumps are manufactured in ISO 9001, ISO 14001 and ISO 18001 accredited facilities in Germany and the UK. VERDERFLEX pumps are used for precise, gentle, aseptic transfer of shear sensitive cultures, nutrient dosing, inter-reactor transfer using USP VI rated tubing.

The Vantage 5000 combines precision dosing with advanced compliance assistance including time stamped record keeping, security from USB backed up settings and records and reassurance of real time feedback and control to master controllers and PLCs. It is a perfect solution for precise and controlled single or batch inline dosing/filling applications. The Rollit hose pumps are lubrication-free. This gives advantages in food and pharma applications because there is no contamination possible; even extending to our new Rollit Thru which gives the option of larger bore continuous tubing in this range of pumps allowing end-to-end process control.



| | Vantage 5000 | Rapide | Rollit |
|---|--|--|----------------------------|
| Concept | Advanced dosing/metering system | Compact transfer | High flow |
| Max. flow | 6,600 ml/min | 17 l/min | 6,9 m ³ /h |
| Max. discharge pressure [bar] | 7 | 2 | 2 |
| Functions | <ul style="list-style-type: none"> Record keeping Digital communication Analog feedback and control | Basic transfer at set speed | Can be inverter controlled |
| Food or pharma graded tubing and hoses* | <ul style="list-style-type: none"> Platinum cured Silicone Verderprene | <ul style="list-style-type: none"> Platinum cured Silicone Verderprene | Verderprene |
| Certifications | | | |

*interchangeable with most other tubing brands

✓ **High accuracy**

The peristaltic range gives the options of easy batch tube change, minimum maintenance, and with the Vantage 5000 up to +/- 1% accuracy on a fully controlled dose/metering or transfer application for Single Use Tubing.

✓ **Interchangeable tubing**

Our tubing is interchangeable with all other major tubing suppliers as long as the ID/OD and properties are similar.



Rollit Thru

Single use tube batch production

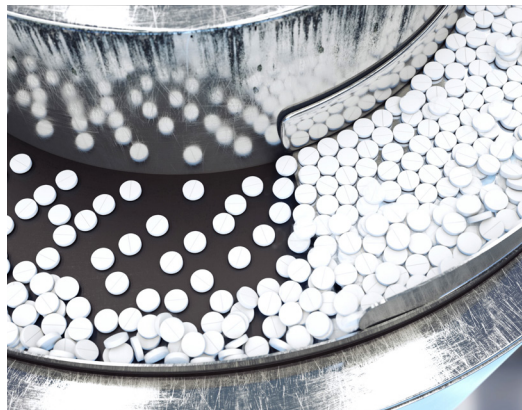
125 (l/h)

1-2

- Single use tubing
- 4 position pump head

- Platinum cured Silicone
- Verderprene

-



VERDER LIQUIDS

The leading pump manufacturer

VERDER LIQUIDS BV

Utrechtseweg 4A
3451 GG Vleuten
The Netherlands

MAIL info@verderliquids.com

WEB www.verderliquids.com

VERDER
passion for pumps

Austria, Belgium, Bulgaria, China, Croatia, Czech Republic, France, Germany, Hungary, India, Italy, The Netherlands, Poland, Republic Of Korea, Romania, Serbia, Slovakia, South Africa, Spain, Switzerland, United Kingdom and United States of America.