

PERISTALTIC DOSING AND METERING PUMPS

# Ds500

## Unlocking the future of water treatment



The Verderflex Ds500 metering and dosing pump with *IoT* enables water treatment organisations and skid builders to supply equipment in the manufacturing of any water and wastewater treatment technology. Whether it is reverse osmosis, desalination, chemical dosing or membrane technology, the Ds500 is an efficient solution for reliable accurate dosing.



### Automotive

Water treatment is vital in the automotive industry, as it takes an average of 400,000 liters of water to manufacture a single vehicle.

To ensure responsible corporate citizenship, various water treatment methods like reverse osmosis, chemical treatment, and membrane technology are commonly used to preserve and treat water resources.



### Food and Beverage

Water quality is crucial in food and beverage production as it directly affects the taste, safety, and shelf life of the manufactured products.

Utility water supplied to the facility, ingredient water used in the product, or water recycling processes; water treatment technology is essential for maintaining product quality and consistency.



### Chemical

Water quality is an indispensable factor in the chemical industry and plays a crucial role in production facilities.

Treating water for cooling towers, maintaining high water quality in boilers, managing service water, or recycling water to meet environmental standards; the significance of water treatment remains constant in various manufacturing and process facilities.



## The Ds500 empowers the pump user for more!

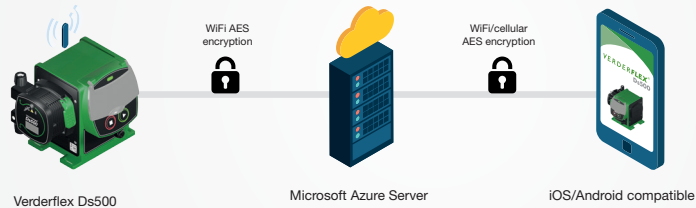
The interactive technology (*IoT*) is developed to allow remote monitoring of the pump health and duty. Given the nature and location of water treatment facilities the cloud-based system reduces the need for physical interaction that in turn reduce scheduled maintenance.

### No gassing

Controlled, accurate dosing of Sodium Hypochlorite (NaOCl) in liquid form is used as a disinfecting agent in water treatment, the Ds500 as a peristaltic pump maintain the chemical in liquid form and avoid the liquid from gassing.

### Easy and safe *IoT* connectivity

Monitoring from remote locations and less maintenance.



### Quick cartridge replacement

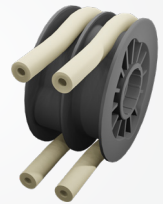
Tool free in just 2 steps. When the *IoT* app informs the owner to replace the pump tube, the cartridge “click and go” design enables the operator with very little effort to return the pump to service within a few minutes.



### Offset rotor shoes

Low pulsation for smooth and accurate flow

Ds500



### Benefits:

- *IoT* real -time data to enable efficient planned maintenance
- Reduced downtime through tool free cartridge replacement
- Seamless integration with existing infrastructure thanks to 4-20mA remote control option



Visit our website →

